

New World Alpaca Textiles

Caring For Alpaca Apparel

Keep your purchases looking like new with these helpful tips.



Socks

High content socks should be hand washed and dried flat. All others can be washed with cool water and dried flat. Do not use bleach.



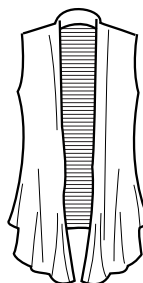
Men's Jackets

Dry clean only.
Do not use bleach.



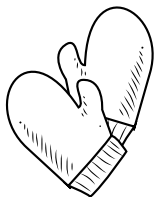
Leg Warmers

Hand wash and dry flat.
Do not use bleach.



Vests

Dry clean only.
Do not use bleach.



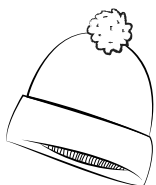
Mittens & Gloves

High content mittens and gloves should be hand washed and dried flat. All others can be washed with cold water and dried flat. Do not use bleach.



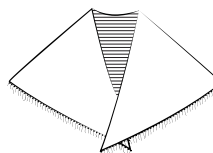
Sweaters & Shirts

Hand wash and dry flat or dry clean. Do not use bleach.



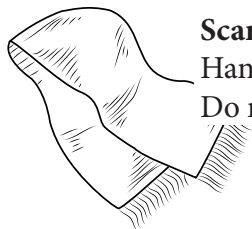
Hats

High content hats should be hand washed and dried flat. All others can be washed with cool water and dried flat. Do not use bleach.



Shawls

Dry clean only.
Do not use bleach.



Scarves

Hand wash and dry flat, or dry clean.
Do not use bleach.



Blankets/Throws

Hand wash and line dry or dry clean.
Do not use bleach.



Hand Washing

Dilute with 1-2 TBSP of mild soap or detergent per 1 gallon of water.
Do not use bleach.



1-2TBSP
Mild Soap

+



1 Gallon
Water